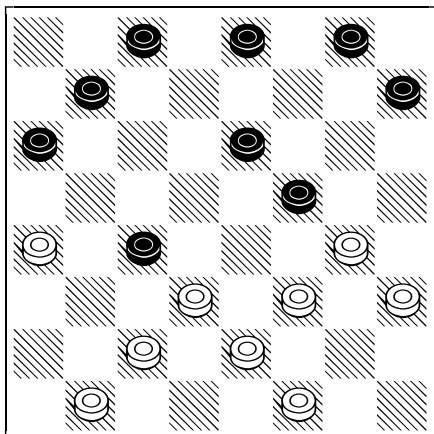


RACCOLTA PARTITE CAMPIONATO ASSOLUTO 2012 - MANTOVA

**1. GASPARETTI MARCELLO -  
SCARPETTA SERGIO**

76° Assoluto MANTOVA, 21.11.2012

1.21-18 10-14 2.23-20 14x21 3.25x18 11-15  
4.20x11 07x21 5.26x17 12-15 6.28-23 05-10 7.23-  
20 06-11 8.32-28 01-05 9.28-23 10-14 10.30-26 14-  
18

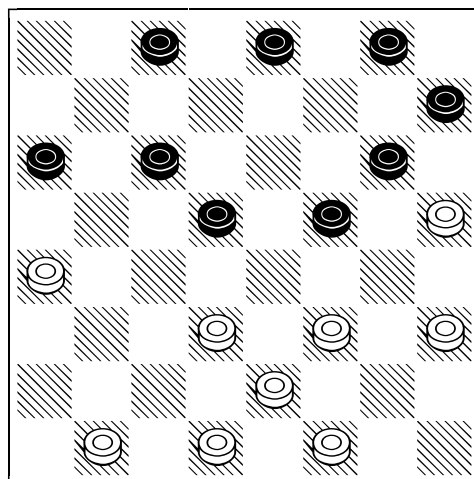


11.22x13 09x18 12.17-13 03-06 13.29-25 05-10  
14.26-22 10x17 15.22x13 08-12 16.20-16 11-14  
17.16x07 04x11 18.23-20 14-19 19.31-28 17-21  
20.25x18 19-22 21.27-23 22-26 22.13-09 26-30  
23.09-05 02x09 24.18-14 11x18 25.20x02 30-27  
26.23-20 ½-½

**2. GITTO FRANCESCO -  
FERO MARIO**

76° Assoluto MANTOVA, 21.11.2012

1.21-18 10-14 2.23-20 14x21 3.25x18 12-15 4.28-  
23 06-10 5.23-19 10-14 6.19x10 05x21 7.26x17  
01-05 8.32-28 05-10 9.28-23 07-12 10.20-16 11-  
14

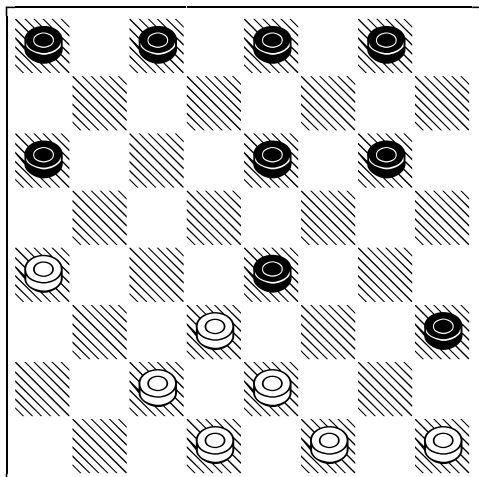


11.16x07 04x11 12.30-26 08-12 13.17-13 10x17  
14.22-19 15x22 15.26x10 09-13 16.29-25 11-14  
17.24-20 13-18 18.27-22 18x27 19.31x22 12-16  
20.20-15 02-06 21.22-19 06x13 22.19x10 13-18  
23.23-19 18-22 24.10-05 22-27 25.05-02 27-30  
26.19-14 30-27 27.02-06 ½-½

**3. INTILLA LUSSORIO –  
CORTESE GERARDO**

76° Assoluto MANTOVA, 21.11.2012

1.21-18 10-14 2.23-20 14x21 3.25x18 11-15  
4.20x11 07x21 5.26x17 12-15 6.28-23 06-11 7.29-  
26 05-10 8.23-19 08-12 9.19-14 10x19 10.24-20  
15x24

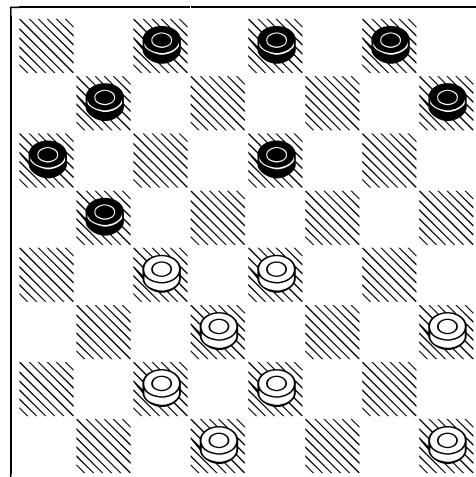


11.22x08 01-05 12.32-28 05-10 13.28-23 10-14  
14.27-22 11-15 15.30-27 03-06 16.26-21 06-11  
17.22-19 15x22 18.27x18 02-05 19.23-20 14-19  
20.20-16 19-22 21.16-12 22-26 22.12-07 26-29  
23.07-03 29-26 24.03-07 26-22 25.07x14 22x13  
26.14-19 13-18 27.17-13 18x25 28.13-10 05x14  
29.19x10 25-21 30.10-13 21-26 31.13-18 26-30  
32.18-13 30-27 33.13-18 27-23 34.18-13 23-19  
35.13-18 19-15 36.18-13 04-07 37.08-04 07-12  
38.13-18 12-16 39.04-07 16-20 40.07-03 15-11  
41.31-27 24-28 42.27-22 28-31 43.22-19 31-27  
44.19-15 27-23 45.15-12 23-19 46.12-08 20-23  
47.08-04 23-27 48.03-07 19-22 49.07x14 22x13  
50.04-07 27-30 51.07-03 13-17 52.03-06 30-26  
53.14-18 17-13 54.18-14 26-21 55.06-11 13-17  
56.14-19 09-13 \*

**4. MAIJNELLI MICHELE –  
FALEO PAOLO**

76° Assoluto MANTOVA, 21.11.2012

1.21-18 10-14 2.23-20 14x21 3.25x18 12-15 4.27-  
23 06-10 5.31-27 10-14 6.29-25 14x21 7.25x18  
05-10 8.23-19 01-05 9.19x12 07x23 10.28x19 10-  
13

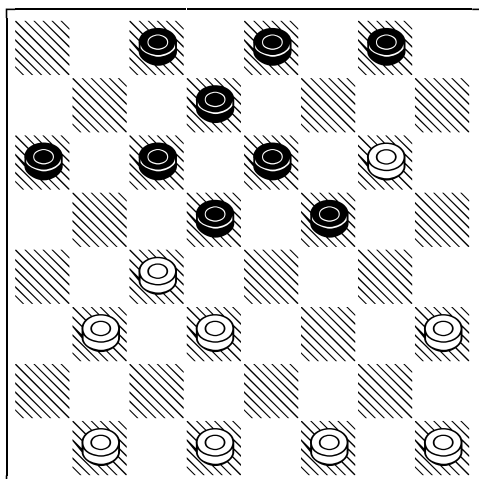


11.32-28 05-10 12.19-15 11x20 13.24x15 04-07  
14.28-23 07-11 15.15x06 02x11 16.26-21 10-14  
17.23-19 14x23 18.27x20 08-12 19.20-16 13-17  
½-½

**5. NEGRONE CASCIANO LUCIANO -  
SIGNORINI DIEGO**

76° Assoluto MANTOVA, 21.11.2012

1.21-18 10-14 2.23-20 14x21 3.25x18 12-15 4.28-23 05-10 5.23-19 01-05 6.19x12 07x23 7.27x20 10-14 8.26-21 08-12 9.20-16 12-15 10.16-12 05-10

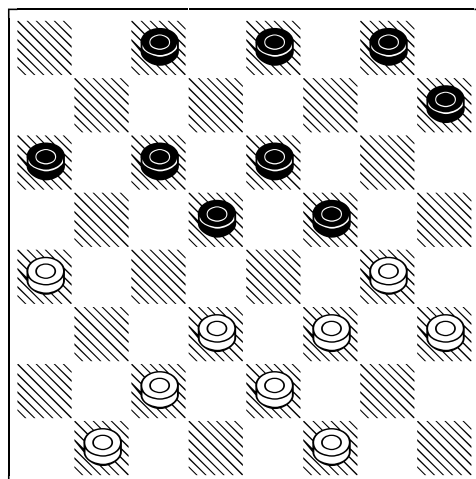


11.32-28 14-19 12.29-26 10-14 13.31-27 15-20 14.24x15 11x20 15.18x11 06x15 16.27-23 20x27 17.30x14 15-20 18.28-24 20-23 19.24-20 04-08 20.12-07 03x12 21.20-15 12x19 22.22x15 23-27 23.14-11 27-30 24.11-07 30-27 25.07-03 27-22 26.03-07 22x29 27.21-18 29-26 28.18-14 26-22 29.14-11 22-19 30.15-12 08x15 31.11-06 02x11 32.07x23 ½-½

**6. PERANI PIERLUIGI -  
RONDA GIANMARCO**

76° Assoluto MANTOVA, 21.11.2012

1.21-18 10-14 2.23-20 14x21 3.25x18 11-15 4.20x11 07x21 5.26x17 05-10 6.24-20 06-11 7.28-24 12-15 8.32-28 01-05 9.28-23 10-14 10.30-26 05-10



11.26-21 02-06 12.29-25 10-13 13.17x10 06x13 14.21-17 08-12 15.17x10 12-16 16.22-19 15x22 17.27x18 14x21 18.25x18 03-07 19.20-15 11x27 20.31x22 07-12 21.10-06 04-08 22.22-19 12-15 23.19x12 08x15 24.06-03 15-19 25.03-06 19-22 26.06-10 22-26 27.10-14 26-29 ½-½